

## ERPem – Edinburgh Research Partnership in Engineering and Mathematics

<b>POOL</b>	<a href="#">ERPem – Edinburgh Research Partnership in Engineering and Mathematics</a>		
<b>Original Partners</b>	Edinburgh Heriot Watt  Additional funding included Napier		
<b>Funding</b>	£9.8M SFC £2M OST £10M institutional (definitive doc)  Plus later investment £2.6M SFC + £5M institutional Additional funding for inclusion of Napier, a 6 <sup>th</sup> JRI and pan-Scotland activity		
<b>Start</b>	Letter of award April 2005	<b>End</b>	Final report 12/13
<b>Original objectives</b>			
<i>The long-term vision of ERPem is to be the prime vehicle for world-leading research in Engineering and Mathematical Sciences carried out at the participating institutions, and one which is recognised worldwide as a centre of excellence in these disciplines."</i>			
<b>Inclusivity policy</b>	Just the two institutions. Membership (of individuals) required 4 journal publications.		

### Funding breakdown (From definitive document + later investment)

	SFC + OST (£000s)	Institution (£000s)	Total (£000s)
<b>Salaries</b> <b>13 Chairs</b> <b>13 Lecturers</b>			<b>10,050</b>
Studentships ( )			<b>1260</b>
Graduate school			<b>934</b>
Directorate (2FTE Admin)			<b>720</b>
Infrastructure			<b>8,400</b>
Accommodation			<b>8289</b>
<b>Total</b>	<b>£14,500</b>	<b>£15,177</b>	<b>30,653</b>

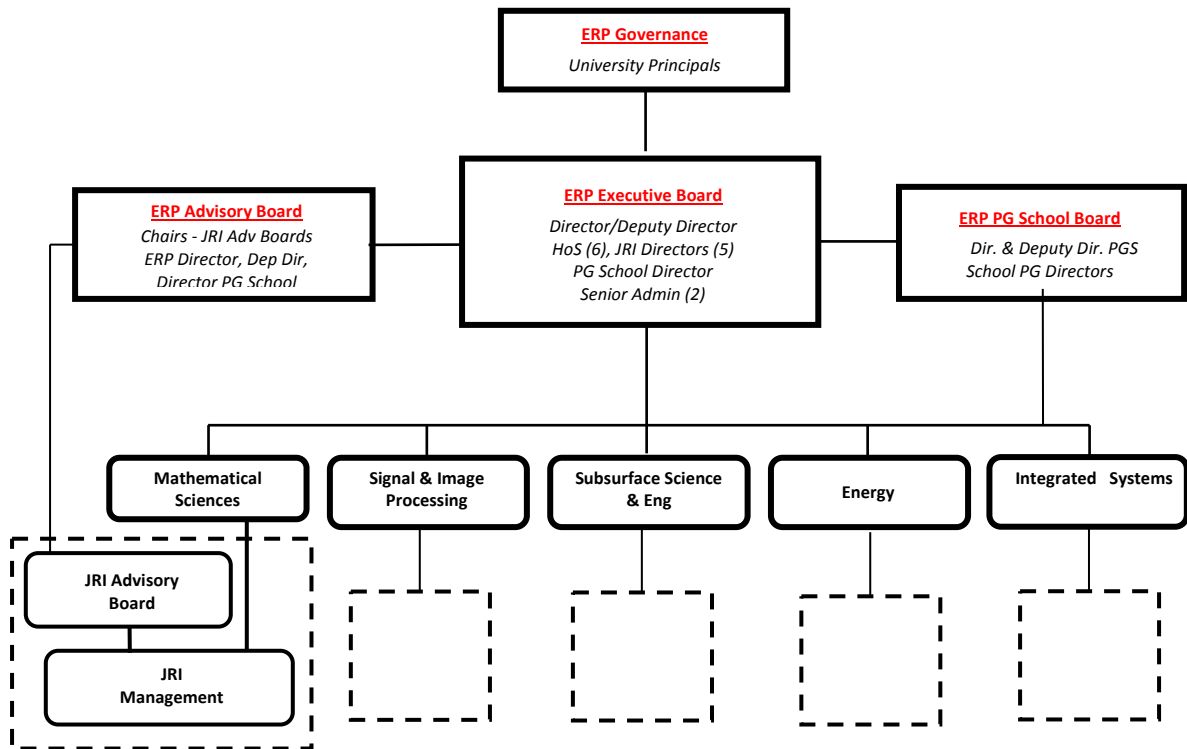
### Governance / structure

<b>Original Governance</b>	See diagram
<b>Research themes</b>	<ul style="list-style-type: none"> <li>▪ Signal and in Image Processing,</li> <li>▪ Mathematical Sciences,</li> <li>▪ Subsurface Science and Engineering</li> <li>▪ Energy</li> <li>▪ Precision Optical, Electronic and Miniature Systems (<i>Institute of Integrated Systems</i>)</li> <li>▪ Pan-Scotland Telford Institute (civil engineering)</li> </ul>
<b>Directorate</b>	Director Deputy director rotating every two years. 2 x Administrators

## ERPem – Edinburgh Research Partnership in Engineering and Mathematics

### End of award

<b>Final report</b>	January 2014
<b>Highlights from final report</b>	26 Staff appointed and commitment to maintain. Joint REF submissions Leadership of 3 CDTs Significantly enhanced facilities Many examples of leverage, especially from the facilities Over the 5 years 2008 – 2013 ERPem was awarded £106M of research income From UKRCs, EU, TSB and industry



## GRPe – Glasgow Research Partnership in Engineering

<b>POOL</b>	<a href="#">GRPe – Glasgow Research Partnership in Engineering</a>		
<b>Original Partners</b>	Glasgow GCU Strathclyde Paisley (UWS)		
<b>Funding</b>	SFC £15.7M Institutions £45.8M		
<b>Start</b>	2006/7	<b>End</b>	2011/12
<b>Original objectives</b>			
<p>The overarching aim of the GRP in Engineering is to enhance the international competitiveness and standing of selected areas of engineering in the West of Scotland. The JRI research areas presented in this proposal are those in which the Universities of Glasgow and Strathclyde already have internationally recognised research strengths. Collaboration with each other, and with Glasgow Caledonian University and the University of Paisley, will create an elite research pool, which will promote inclusivity by giving potentially leading researchers from other Institutions access to world class facilities. In this way the GRP will promote complementary activity and enhanced volume leading to increased research success.</p>			

### Funding breakdown

	<b>SFC (£000s)</b>	<b>Institution (£000s)</b>	<b>Total (£000s)</b>
<b>Salaries</b>	<b>10,000</b>	<b>16,025</b>	<b>26,025</b>
SFC funded Chairs x 7 Lecturers x 18 RAs x 8			
Studentships (32)	<b>1,700</b>	<b>5,631</b>	<b>7,331</b>
Graduate school			
Directorate			
Equipment	<b>3,800</b>	<b>24,150</b>	<b>27,950</b>
<b>Total</b>	<b>15,700 (rounding)</b>	<b>45,800</b>	<b>62,500</b>

### Governance / structure

<b>Original Governance</b>	See diagram
<b>Research themes</b>	Electronic, Communications and Power Systems; Environmental, Infrastructure and Transport Engineering; and Mechanics of Materials, Structures and Bio-engineering;
<b>Directorate</b>	

### End of award

<b>Final report</b>	January 2014
<b>Highlights</b>	All targets met Research income increased by 83% to £32M over the period from 2006 to 2013 Overall staff increase of 37% to 742.

## ETP – Energy Technology Partnership

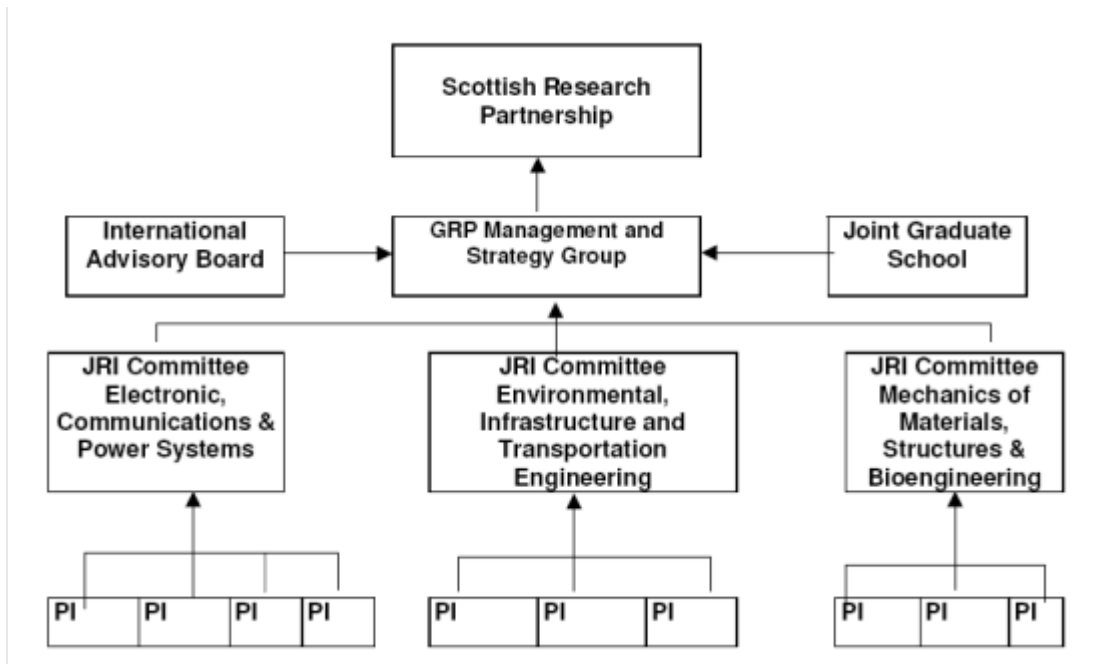
Panel to meet 3 September 2018 to award 6 grants.

In AY18/19 ETP was awarded £1.5M by SG, SE, and HIE for KEN III, a 3-year programme increasing the impact of research on the wider economy by connecting innovating SMEs with academia.

In 18/19 ETP IEF funding (~£40k) for four local multi-vector energy systems modelling projects (with SMEs and academia) enabled all to either partner or participate on a €2.5m European Framework-funded Smart Integrated Energy Systems (SIES2022) project, in a consortium with German, Spanish and Turkish partners. SIES2022 will deliver a virtual power plant and digital energy management service for over 10 UK local energy systems initiatives.

## GRPe – Glasgow Research Partnership in Engineering

	<p>Increase in PGR studentships of 149% to 982</p> <p>Joint Graduate School: promoted inter-institutional research support/joint supervision/joint programme activities eg summer schools, workshops and conferences</p> <p>GRPE member institutions and academic staff have been central to the foundation of a number of national high-profile initiatives in knowledge exchange, industry engagement and commercialization</p>
<b>Major changes/challenges</b>	<p>With hindsight funding to coordinate collaborative bids was challenging and should have been included in the original proposal</p> <p>Had originally planned a joint RAE submission but this did not happen</p>



## Northern Research Partnership in Engineering - NRPe

<b>POOL</b>	<a href="#">NRPe – Northern Research Partnership in Engineering</a>		
<b>Original Partners</b>	Aberdeen, Dundee, RGU		
<b>Funding</b>	£8.2M SFC £52M institutional		
<b>Start</b>	2005/6	<b>End</b>	2013/14
<b>Original objectives</b>			
The purpose of this partnership is to pool research strength in areas common to partner universities, and to exploit areas of complementarity. It is the first time that the institutions have agreed to go beyond collaboration on an ad-hoc basis towards a convergence of research priorities in the area of engineering and related disciplines research. This is very much enhancing research performance of the participating groups in all partner universities by creating critical mass, and increasing significantly the competitiveness of research groups in the region.			

### Funding breakdown

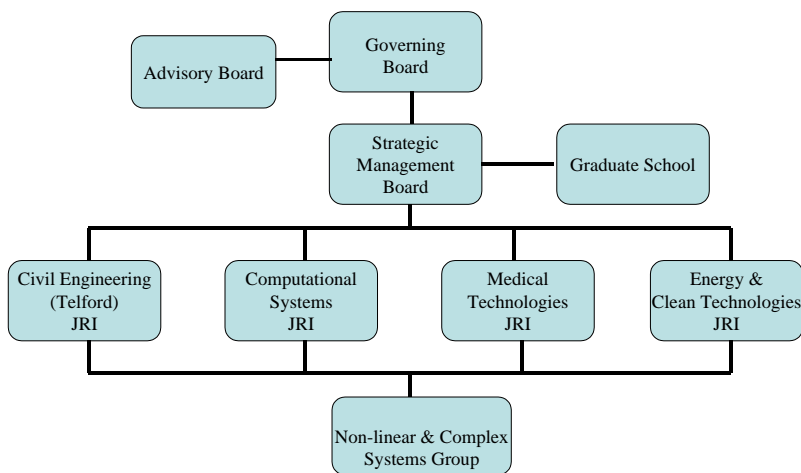
	<b>SFC (£000s)</b>	<b>Institution (£000s)</b>	<b>Total (£000s)</b>
<b>Salaries</b> <b>SFC funded</b> Chairs x 11 Lecturers x 7 <b>Institution funded</b> Chairs x 6 Non-professors x 16	<b>5,800</b>	<b>15,384</b>	<b>21,184</b>
Studentships (25)	<b>720</b>	<b>4,771</b>	<b>5,491</b>
Graduate school	<b>600</b>	<b>2,000</b>	<b>2,600</b>
Directorate	<b>340</b>	<b>1,170</b>	<b>1,510</b>
Equipment	<b>700</b>	<b>2,450</b>	<b>3,150</b>
Buildings and infrastructure		<b>26,270</b>	<b>26,270</b>
<b>Total</b>	<b>8,200</b>	<b>52,000</b>	<b>60,200</b>

### Governance / structure –

<b>Original Governance</b>	See diagram
<b>Research themes</b>	Civil engineering; Computational Systems; Energy and Clean Technologies; and Medical Technologies
<b>Directorate</b>	
<b>Final report</b>	LINK January 20xx

## Northern Research Partnership in Engineering - NRPe

<b>Highlights</b>	<p>£9M research income in 12-13, £45M over the life of the pool.</p> <p>There have been some major developments within the three Institutes that have been a direct result of the Partnership, and will be seen as lasting legacies, for example; the creation of the Offshore Renewables Institute and securing £2m ERDF/UoD funding for the Marine Renewables Test Centre for Materials and Foundations.</p> <p>With an additional 9 PhD students commencing in late 2012, the Partnership supported a total of 34 studentships.</p>
<b>Major changes/challenges</b>	<p>One year no cost extension due to money saved in the administrative capacity</p>



## Scottish Research Partnership in Engineering - SRPe

### Continuation Funding

SRPe – Scottish Research Partnership in Engineering			
<b>Partners</b>	10 Partner Universities: Aberdeen, Dundee, Edinburgh, Glasgow, Glasgow Caledonian Heriot Watt, Napier, Robert Gordon, Strathclyde, West of Scotland. Formed from the three regional pools (ERPem; GRPe; NRPe).		
<b>Funding</b>	SFC £750,000 reduced to £612,500 Institutions £612,500		
<b>Start</b>	July 2015	<b>End</b>	July 2020

### Funding breakdown

	<b>Total (£000s)</b>
Staff costs (Directorate)	<b>750</b>
Graduate school (including summer schools, DVPs, conference)	<b>300</b>
Research collaboration	<b>300</b>
Horizon 2020	<b>150</b>
<b>Total</b>	<b>1,500</b>

<b>Governance</b>	See diagram below
<b>Directorate</b>	1 FTE Executive Director 1 FTE Partnership Manager 1 FTE Administrator

<p>Highlights from AY2017/18 annual report</p> <p>SRPe has now fully consolidated the three regional pools and is established at a pan-Scotland level. Four themes have been established: <i>Advanced Manufacturing; Robotics and Autonomous Systems; Infrastructure and Environment and Engineering at the Life Sciences</i>.</p> <p>Through the Advanced Manufacturing theme SRPe has secured £1.5M funding from Scottish Government/SFC for the National Manufacturing Institute Scotland Industry Doctorate Programme in Advanced Manufacturing (NMIS-IDP) (£1.2M for 30 industry studentships) and the CPD Portfolio in Manufacturing Technology and Leadership to support industry / SMEs.</p> <p>The NMIS-IDP and SRPe-IDP (see below) with total of 42 studentships establishes the SRPe (pan-Scottish) Engineering Graduate School.</p> <p>Proposals are developing through the other themes e.g. within Robotics &amp; Autonomous Systems theme secured strategic leveraging funding of £50K from SFC for delivery of the RAS &amp; AI Industrial Impact Acceleration Initiative targeting the Industrial Strategy Challenge Fund (ISCF) and other industry focused programmes to deliver collaborative bids between £5M - £15M</p> <p>Major change – funds saved through efficiencies and increased in-kind support from institutions has been re-purposed to support 12 industry studentships (SRPe-Industry Doctorate Programme) across Robotics &amp; Autonomous Systems; Infrastructure &amp; Environment; and Engineering at the Life Sciences Interface.</p>
---



# Scottish Research Partnership in Engineering - SRPe

## Governance

